

# Guangzhou

ShunDe KaiPin ZhuHai QingYuan

## A Journey of Delicious Food & Fun



Non-shop ping stop



Free Travel Insurance



Selected Locations



5 Stars Hotel



**Holiday Dreams**™  
梦想假日 Journey Sdn. Bhd.

SSM Registration No: KPK/LN 9863  
Company No: 1334579V



**KL OFFICE**

A-1G-21, Plaza Bukit Jalil (Aurora Place), No.1, Persiaran Jalil 1, Bandar Bukit Jalil, 57000 Kuala Lumpur, Wilayah Persekutuan Kuala Lumpur.



**Sarawak OFFICE**

No 11, 1st Floor, Lorong Ulu Sungai Merah 35B2, 96000 Sibul, Sarawak

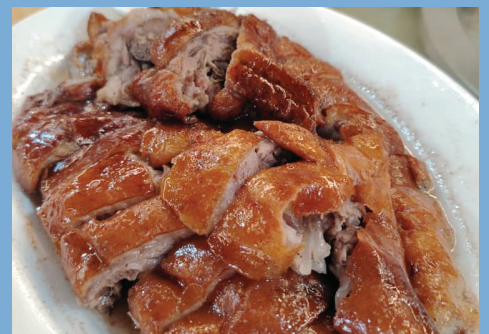


LET'S CHAT!

**0146994596**



## Savoring Local Culinary Delights



Pictures shown are for illustration purposes only, please refer to the actual product.





【温馨提示】每日行程的时间表仅供参考，若遇交通、气候、酒店地点等因素影响，本公司保留调整行程顺序的权利。  
【Friendly Reminder】The daily itinerary schedule is for reference only. In case of factors such as transportation, weather, hotel locations, etc., affecting the schedule, the company reserves the right to adjust the itinerary order.

## DAY 1 KUALA LUMPUR – GUANGZHOU – QINGYUAN

Assemble at Kuala Lumpur Airport, take a flight to Guangzhou, the largest provincial capital city in southern China, known as the City of Sheep and the City of Flowers. After arrival, transfer to Qingyuan, the back garden of Guangzhou (half an hour)

After a short rest in the flower town, go to visit the [Huangtengxia Glass Bridge] + Tianmen Suspension Corridor + Circular Waterfall + Light Show.

 **Hotel** HAMPTON BY HILTON QINGYUAN 5\* OR SIMILAR  
 **Meals** (MOB/QINGYUAN CHICKEN CUISINE)



## DAY 2 QINGYUAN – SHUNDE

After breakfast, go to Shunde, the world's food capital, and visit the first of the four famous gardens in Guangdong-Qinghui Garden, Shunfengshan Archway, Fengjian Water Village, etc.

[Qinghui Garden] is one of the top ten famous gardens in China, ranking first among the four famous gardens in Guangdong. [Shunfeng Archway] The entrance archway of Shunde Shunfengshan Park is rare at home and abroad for its large scale. [Fengjian Water Village] Fengjian Water Village, as one of the early settlements in Shunde, has been inhabited since the Western Han Dynasty.

 **Hotel** GORDON HOTEL 5\* OR SIMILAR  
 **Meals** (B/SEAFOOD PLATTER/ JUN'AN STEAMED PORK CUISINE)



## DAY 3 SHUNDE – KAIPIN

After breakfast, visit Zili Village Diaolou + Chikan Ancient Town: Located in Kaiping City, Jiangmen City, Guangdong Province, China, it is one of the Cantonese buildings and one of the representatives of Cantonese culture. Kaiping Diaolou is a special type of Chinese vernacular architecture. It is a multi-story tower-style building that integrates defense, residence and Chinese and Western architectural art. Its characteristics are the combination of Chinese and Western folk houses, with various styles such as ancient Greek, ancient Roman and Islamic.

 **Hotel** COUNTRY GARDEN EMERALD BAY PHOENIX  
 **Meals** (B/GOOSE CUISINE/EEL PIGEON CUISINE)





DAY  
4

## KAIPIN - ZHUHAI

After breakfast, head to the emerging tourist city, Zhuhai, known as the City of Clouds and Sky on the Sea and the City of Romance. After arriving, visit the city attractions.

[Lovers Road, Fisherwoman Statue] a building that many coastal cities in China are imitating.

[Sun and Moon Shell Opera House] the only opera house built on an island in China.

[Love Post Office] The only love-themed post office in the country with an independent postal code.

[City Balcony] Achieve the landscape effect of leaning against the mountains and facing the sea, and take in a panoramic view of a group of human and natural landscapes.

 **Hotel** ROYALTON INTERNATIONAL HOTEL 5\* OR SIMILAR

 **Meals** (B/JINSHA BAY PIGEON/TAISHAN PIG STOMACH CHICKEN)



DAY  
5

## ZHUHAI - GUANGZHOU

After breakfast, the car will take you to Guangzhou. From the outside, you can see the Canton Tower, Haixinsha, Huacheng Square, Xiguan House, Yongqingfang, Shangxiajiu Pedestrian Street.

[Haixinsha] Haixinsha Island is the end point of the axis of the core area of Zhujiang New Town.

[Huacheng Square] Huacheng Square is known as the "city living room" of Guangzhou.

[Xiguan House] Xiguan House is a large residence built by wealthy merchants in the Xiguan area of Guangzhou.

[Yongqingfang] one of the places with the most Lingnan cultural flavor.

[Shangxiajiu Pedestrian Street] It is a collection of the old Xiguan food culture, Lingnan food culture and Lingnan folk customs in Lingnan culture.

 **Hotel** MERCURE HOTEL 5\* OR SIMILAR

 **Meals** (B/CANTON DIM SUM/FOTIAOQIANG CUISINE)



DAY  
6

## GUANGZHOU - KUALA LUMPUR

After breakfast, free at own leisure, transfer to Guangzhou International Airport to take the flight back home.

 **Meals** (Breakfast/MOB)

贴心安排 无需烦恼

Enjoy a stress-free journey

- 当地导游与司机小费.
- 当地旅游巴士接送
- 中文导游服务.
- 膳食如同行程安排.
- 住宿(2人1房)
- 入场票如行程安排
- 旅游保险(69岁以下)
- 往返机票包含20公斤行李托运
- 领队服务 (T&C Apply)

- Gratuities for local guide and coach driver
- Local private coach services
- Mandarin Speaking Guide Services
- Meals as specified in the itinerary
- Accommodation based on Twin Sharing basis at proposed hotel
- Entrance fees as per itinerary
- Travel Insurance (Cover below 69 years old)
- Return Air Ticket & 20KG Baggage Allowance
- Tour Leader Service (T&C Apply)

【温馨提醒 Gentle Reminder】

价格不包括个人花费或在自由时间内不在行程中列出的购物或活动费用,例如客房服务、洗衣、传真、电传、额外行李费用,以及机场和酒店每人一件行李的搬运费用。

The tour fee does not include personal expenses or any costs for shopping or activities not listed in the itinerary during free time, such as room service, laundry, faxes, telex, extra baggage charges, or portage in/out based on one piece of luggage per person at the airport and hotel.

# 注意事项

## Important Notices



【货币 Currency】  
人民币  
China Yuan RMB



【电压 Voltage】  
220瓦特  
220V



【插座 Power Socket】  
插座类型 A & 插座类型 I  
Type A\* & Type I\*



【时差 Time Difference】  
没有时差  
No time difference



气候  
Weather

【SPRING 春季】  
MAR-MAY 3月-5月  
6°C - 20°C

【SUMMER 夏季】  
JUNE-AUG 6月-8月  
17°C - 28°C

【AUTUMN 秋季】  
SEP-NOV 9月-11月  
15°C - 23°C

【WINTER 冬季】  
DEC-FEB 12月-2月  
1°C - 10°C



Holiday Dreams™  
梦想假日 Journey Sdn. Bhd.

SSM Registration No: KPK/LN 9863  
Company No: 1334579V



KL OFFICE

A-LG-21, Plaza Bukit Jalil (Aurora Place), No.1,  
Persiaran Jalil 1, Bandar Bukit Jalil, 57000 Kuala  
Lumpur, Wilayah Persekutuan Kuala Lumpur.

Sarawak OFFICE

No 11, 1st Floor, Lorong Ulu Sungai Merah 35B2,  
96000 Sibul, Sarawak

LET'S CHAT!



0146994596