

8 D 7 N

# Gansu Silk Road Qinghai



Non-shopping  
stop



Travel  
Insurance



Famous  
Check-point



4-5 ★  
Hotel



**Holiday Dreams**™  
Journey Sdn. Bhd.

SSM Registration No: KPK/LN 9863  
Company No: 1334579V



**CHERAS OFFICE**

37-5-1, Level 5, Block G, Cheras Business Centre,  
Jalan 3/101C Cheras, 56100 Kuala Lumpur



**SIBU OFFICE**

No 11, 1st Floor, Lorong Ulu Sungai Merah 35B2,  
96000 Sibu, Sarawak



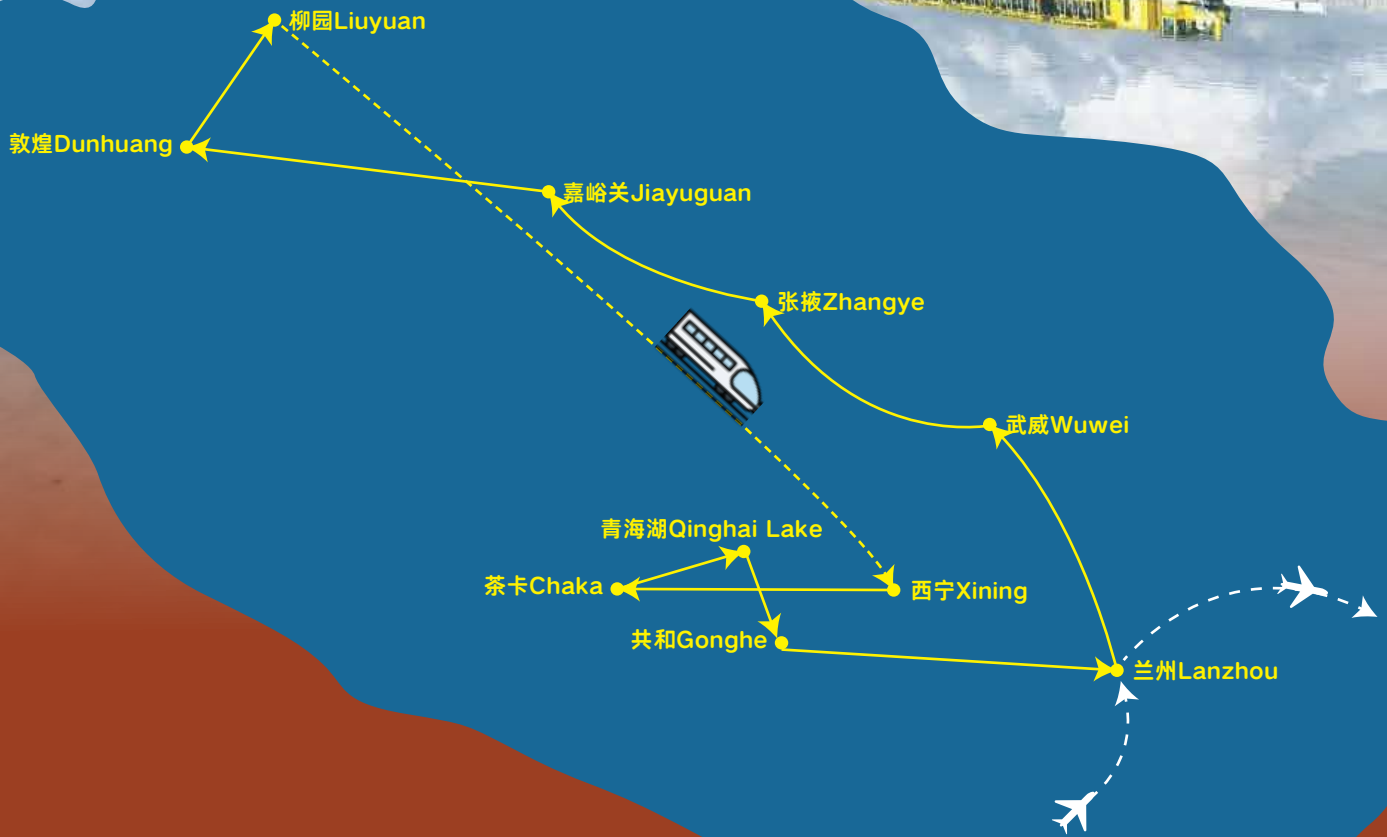
**LET'S CHAT!**

**0149804596**

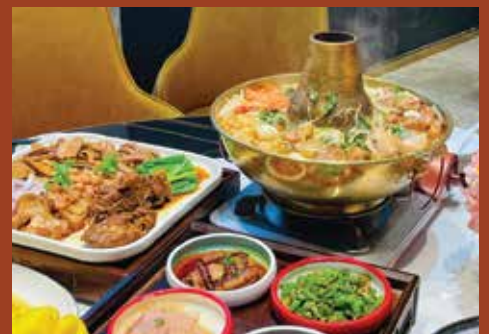




Holiday Dreams  
Journey Sdn. Bhd.



## Taste local delicacies and gourmet dishes



The above images are for reference only. Actual items may vary.





【温馨提示】每日行程的时间表仅供参考，若遇交通、气候、酒店地点等因素影响，本公司保留调整行程顺序的权利。  
【Friendly Reminder】The daily itinerary schedule is for reference only. In case of factors such as transportation, weather, hotel locations, etc., affecting the schedule, the company reserves the right to adjust the itinerary order.

## DAY 1 KUALA LUMPUR / TRANSIT CITY / LANZHOU

After airport pickup, arrange lunch and check in to the hotel for rest.

**Meal** MOB

**Hotel** Holiday Inn Express Jianlan or SML 4\* hotel

## DAY 2 LANZHOU - WUWEI - ZHANGYE

After breakfast, visit Zhongshan Bridge, the Yellow River Mother Statue, the Water Wheel Garden, and Wuwei Confucian Temple to experience Gansu's rich historical and cultural heritage.

**Hotel** Pinzun International Hotel or SML quasi-\*5 hotel

**Meal** B: Hotel / L:Chinese Cuisine /  
D: Ganzhou Spare Ribs Cuisine



## DAY 3 ZHANGYE - JIAYUGUAN

After breakfast, visit Danxia Geological Park (including shuttle bus), followed by a visit to Jiayuguan Fortress (including electric cart).

**Hotel** Far East Luenhua Hotel or SML \*4 hotel

**Meal** B: Hotel / L:Chinese Cuisine /  
D: Qiguo Chicken Cuisine



## DAY 4 JIAYUGUAN - DUNHUANG

After breakfast, visit Mingsha Mountain and Crescent Moon Spring (including an electric cart), followed by a visit to Shazhou Night Market.

**Hotel** Luye International Hotel or SML \*4 hotel.

**Meal** B: Hotel / L:Chinese Cuisine /  
D: Snow Mountain Camel Hoof Cuisine



## DAY 5 DUNHUANG - LIUYUAN - XINING

After breakfast, visit the Mogao Caves (including a shuttle bus). Then, take a high-speed train to Xining, where you'll be picked up from the airport and checked into the hotel.

**Hotel** Holiday Inn Express or SML \*4 hotel

**Meal** B: Hotel / L:Chinese Cuisine /  
D: Cordyceps Flower and Free-range Chicken Stew Cuisine





DAY  
6

## XINING - CHAKA - QINGHAI LAKE

After breakfast, head to Chaka Salt Lake (round-trip by mini train).

 **Hotel** Lakeview Hotel or SML \*4 hotel  
(Mountain View Room)

 **Meal** B: Hotel / L: Chinese Cuisine  
D: Plateau Cuisine

DAY  
7

## GONGHE - QINGHAI LAKE - LANZHOU

After breakfast, head to Qinghai Lake (including a lake-side sightseeing bus).

 **Hotel** Holiday Inn Express Jianlan or  
SML \*4 hotel.

 **Meal** B: Hotel / L: Chinese Cuisine  
D: Jincheng Hotpot Cuisine

DAY  
8

## LANZHOU / TRANSIT CITY / KUALA LUMPUR

After breakfast, transfer to Lanzhou International Airport to end the beautiful journey and return to your warm home.

## 贴心安排 无需烦恼

## Enjoy a stress-free journey

- 当地导游与司机小费.
- 当地旅游巴士接送
- 中文导游服务.
- 膳食如同行程安排.
- 住宿(2人1房)
- 入场票如行程安排
- 旅游保险
- 往返机票包含20公斤行李托运
- 领队服务

- Gratuities for local guide and coach driver
- Local private coach services
- Mandarin Speaking Guide Services
- Meals as specified in the itinerary
- Accommodation based on Twin Sharing basis at the proposed hotel
- Entrance fees as per itinerary
- Travel Insurance
- Return Air Ticket & 20KG Baggage Allowance
- Tour Leader Service

## 【温馨提醒 Gentle Reminder】

价格不包括个人花费或在自由时间内不在行程中列出的购物或活动费用，例如客房服务、洗衣、传真、电传、额外行李费用，以及机场和酒店每人一件行李的搬运费用。  
The tour fee does not include personal expenses or any costs for shopping or activities not listed in the itinerary during free time, such as room service, laundry, faxes, telex, extra baggage charges, or portorage in/out based on one piece of luggage per person at the airport and hotel.